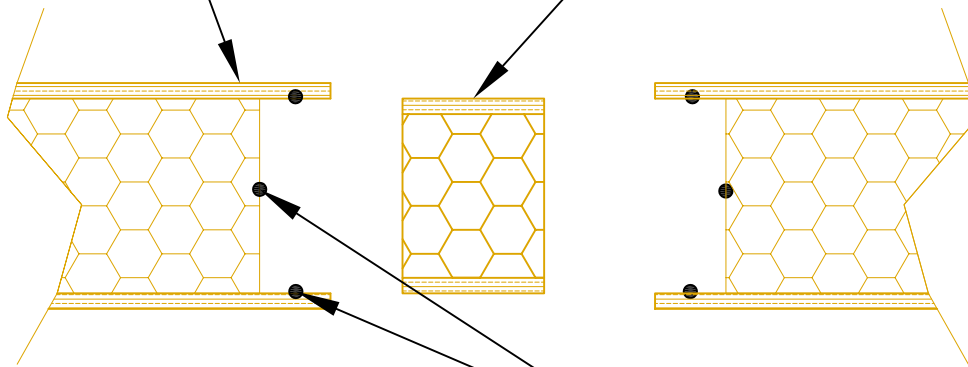


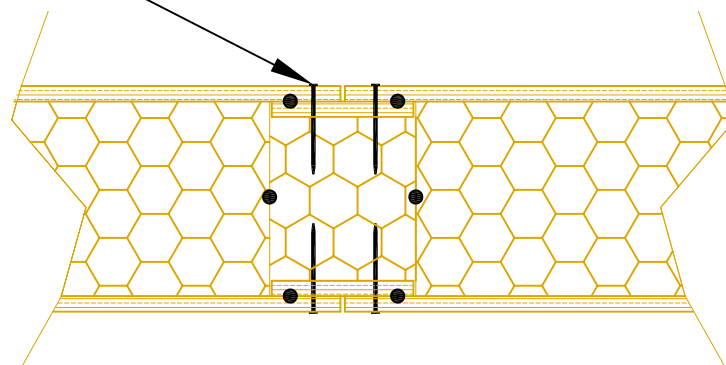
SIP Build Floor, Wall,
or Roof Panel

Panel Spline



Fasten Splines Using
2.8 x 63mm
Galvanised Nails @
150mm c/c

Continuous bead of SIP Build
Adhesive/Sealant



Structural Insulated Panels

SIP Build Limited
Unit 2, Expressway Industrial Estate, Turnall Road, Ditton,
Widnes, Cheshire, WA8 8RB
Tel: 0870 850 2264 Fax: 0870 850 2265
Email: info@sipbuildltd.com

Drawing Title:

Typical Panel Spline Joint

Revisions:

Date:

October 2006

Drawn by:
KA

Scale:
1:5

