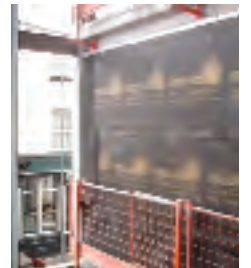


ROSCOE STREET



**NEW BUILD, SIPCO INFILL,
PRIVATE HOUSING.**

SIPCO designed, manufactured and installed over 4000 sq.m of 125mm panel to a steel frame building in Liverpool city centre.

In total 28 high specification luxury apartments were constructed on this development.

A traditional brick external skin was used to fit with the established surroundings.



Structural Insulated Panels

www.thesipcompany.com